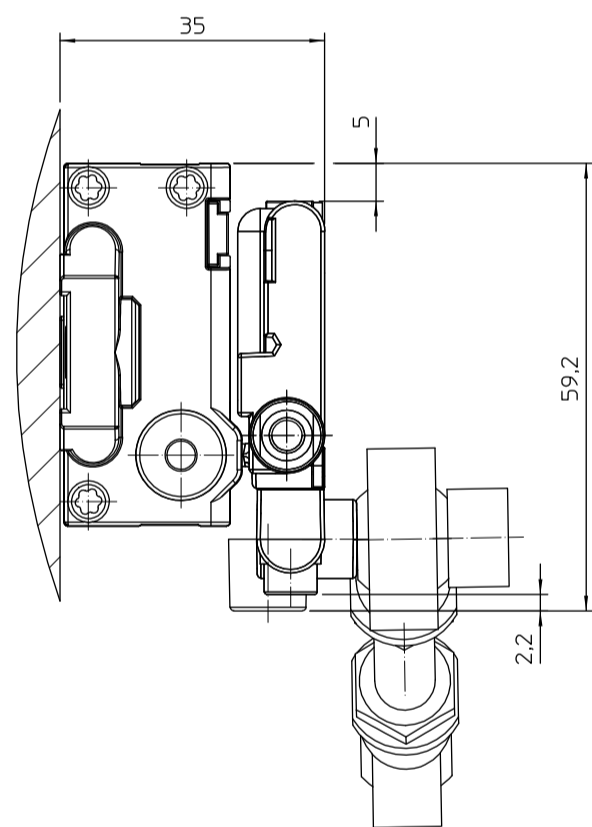
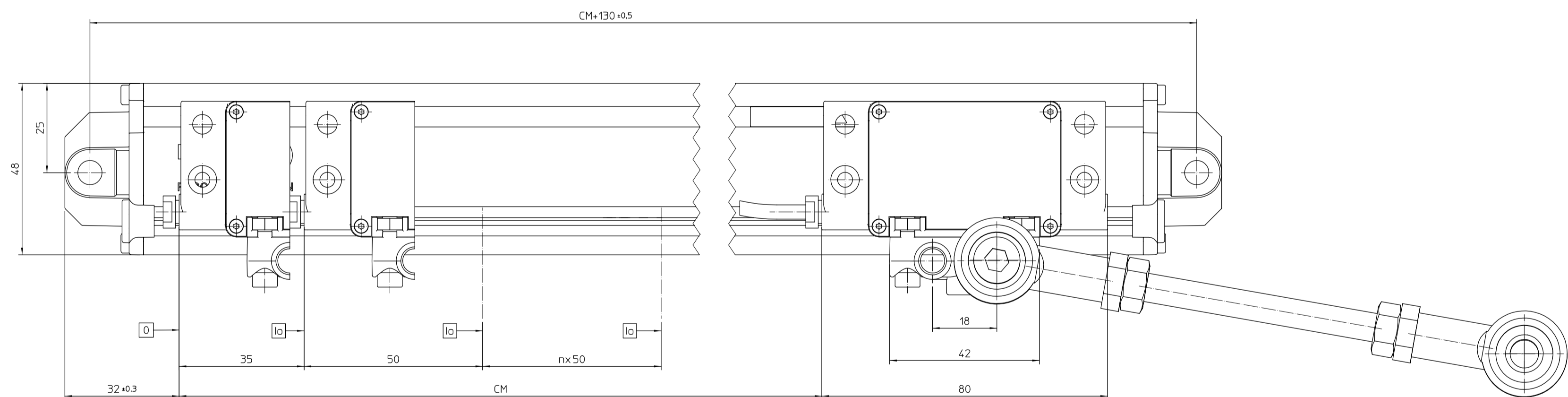


The technical drawing consists of two views of a mechanical assembly:

- Top View:** Shows a long horizontal component with a total length dimensioned as $\text{CM} + 144$. It features several mounting points and a central cylindrical section.
- Bottom View:** Shows a side profile of the same component. Key dimensions include:
 - A vertical distance of 24 from the base to the top edge.
 - A small vertical offset of 10.
 - A horizontal distance of 90 from the right end to the center of the main body.
 - A horizontal distance of 45,16 from the left end to the center of the main body.
- Surface Finish Symbol:** Located near the bottom right, it specifies:
 - $R_a \leq 0.5\ \mu\text{m}$
 - $R_z \leq 0.1\ \mu\text{m}$



CM = Curso medición
CM = Measuring length
G = Guía máquina
G = Machine guideway
0 = Comienzo curso medición CM
0 = Code start value
lo = Marca de referencia
lo = Reference marks

| | | | | | | Escala: 1:1 |
|--------------|--------------------|-------|---------------------------|-------|---------|----------------------|
| | | | | | | mm |
| | | | | | | Tolerancing ISO 8015 |
| | | | | | | ISO 7268 - m H |
| | | | | | | < 6 mm±0.2 mm |
| Nº | Modificado | | Propu. | Vº Bº | Fecha | |
| Nº | Designación PB-970 | Cant. | Material | | Acabado | |
| Piano Nº | El 05-10-16 | | Fagor Automation S. Coop. | | | |
| Sustituye a: | Dibujado Sormen | | 20500 Mandragón | | | |
| | Comprobado | | | | | |
| 4 | 1 | 3 | 2 | | | 1 |